

MONTHLY MEMBERSHIP PROGRESS REPORT

LOCATION NEPAL

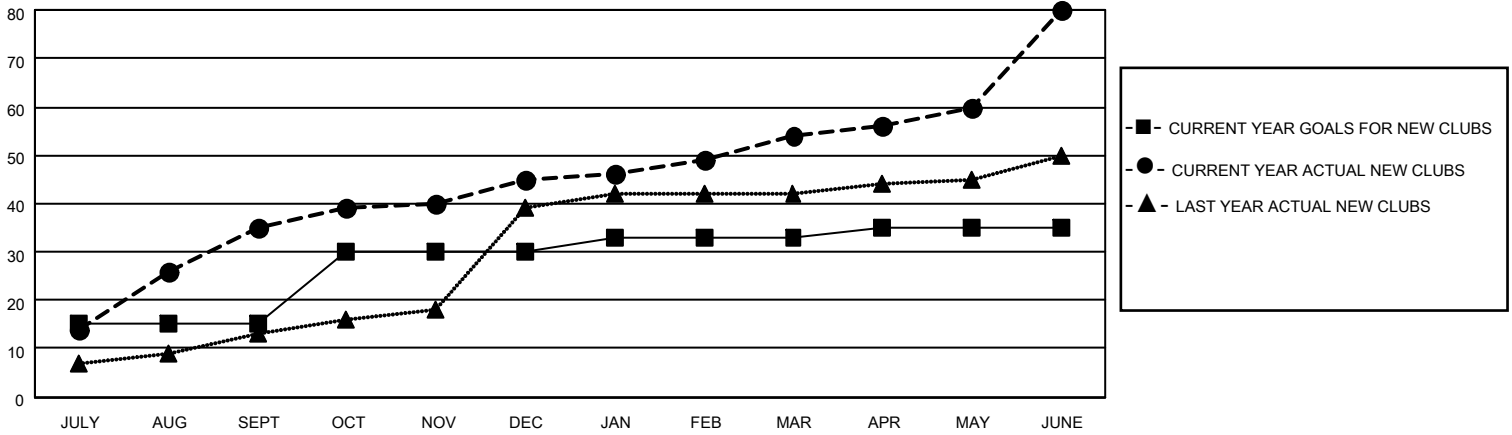
District 325A2

Results as of: 6/30/2022

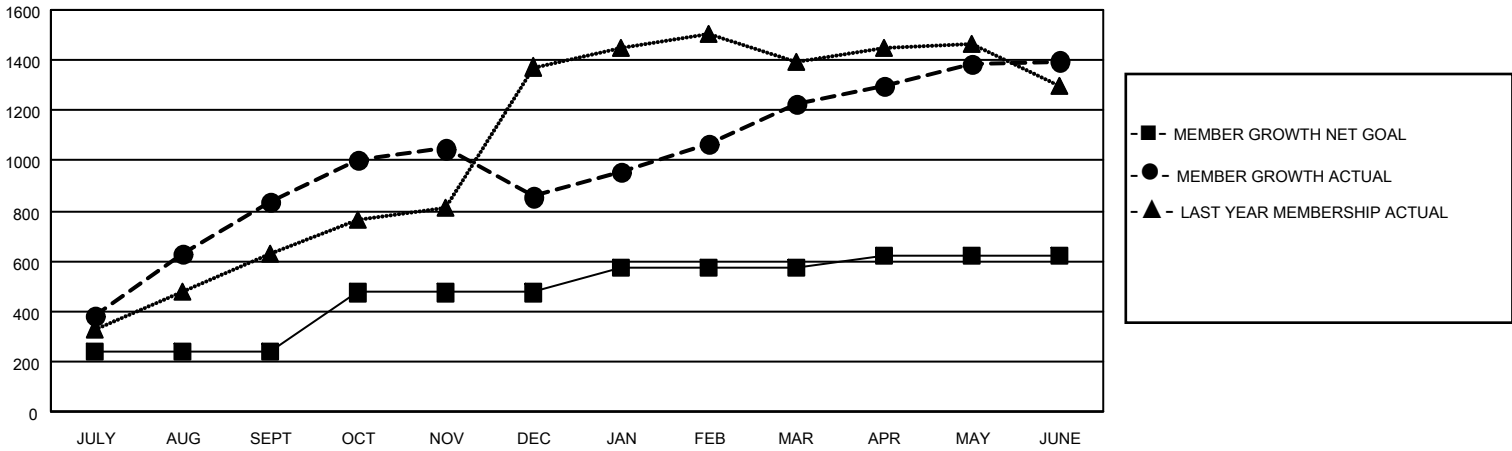
Clubs			
RESULTS FOR 2021-2022			
QUARTER	NEW CLUB GOAL	NEW CLUBS	DROPPED CLUBS
JULY/AUG/SEPT	15	35	6
OCT/NOV/DEC	15	10	4
JAN/FEB/MAR	3	9	2
APR/MAY/JUNE	2	26	3

Members			
RESULTS FOR 2021-2022			
QUARTER	MEMBER GROWTH NET GOAL	MEMBER GROWTH ACTUAL	DROPPED MEMBERS ACTUAL (including transfers)
JULY/AUG/SEPT	237	1183	324
OCT/NOV/DEC	237	496	447
JAN/FEB/MAR	100	453	74
APR/MAY/JUNE	50	1174	963

GOALS AND ACTUAL NEW CLUBS CUMULATIVE



GOALS AND ACTUAL MEMBERS CUMULATIVE



DROPPED CLUBS: 15

230 CLUBS OF 317 ADDED 1 OR MORE NEW MEMBERS

GENDER DISTRIBUTION

DROPPED MEMBERS

DECEASED	8
CLUB CANCELLED	255
OTHER	1,545
TOTAL	1,808

[CLICK HERE FOR CUMULATIVE MEMBERSHIP DATA](#)

MALE	5,147 (68.31%)
FEMALE	2,382 (31.61%)
NON BINARY	0 (0.00%)
PREFER NOT TO ANSWER	6 (0.08%)

TOTAL FAMILY UNIT MEMBERS 5,594

FAMILY MEMBERS PAYING HALF DUES 3,787